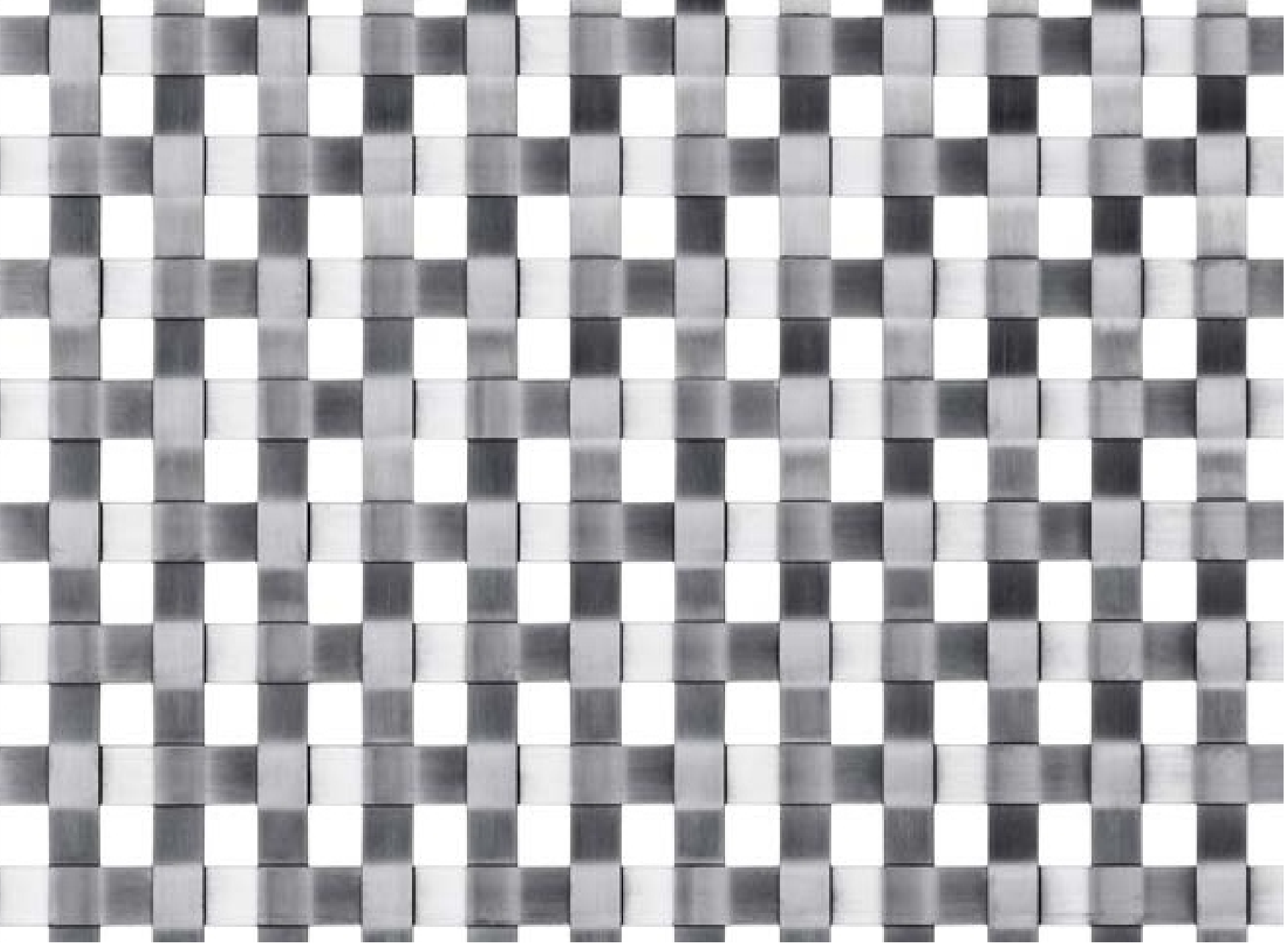


# XY-2156



MATERIAL	Stainless Steel
CABLE NO.S	1
CABLE DIA.	6mm*1.5mm
CABLE PITCH	12mm
WEIGHT	12.23kg/m <sup>2</sup>
MAXIMUM "A" DIMENSION	8m
MAXIMUM "B" DIMENSION	20m

