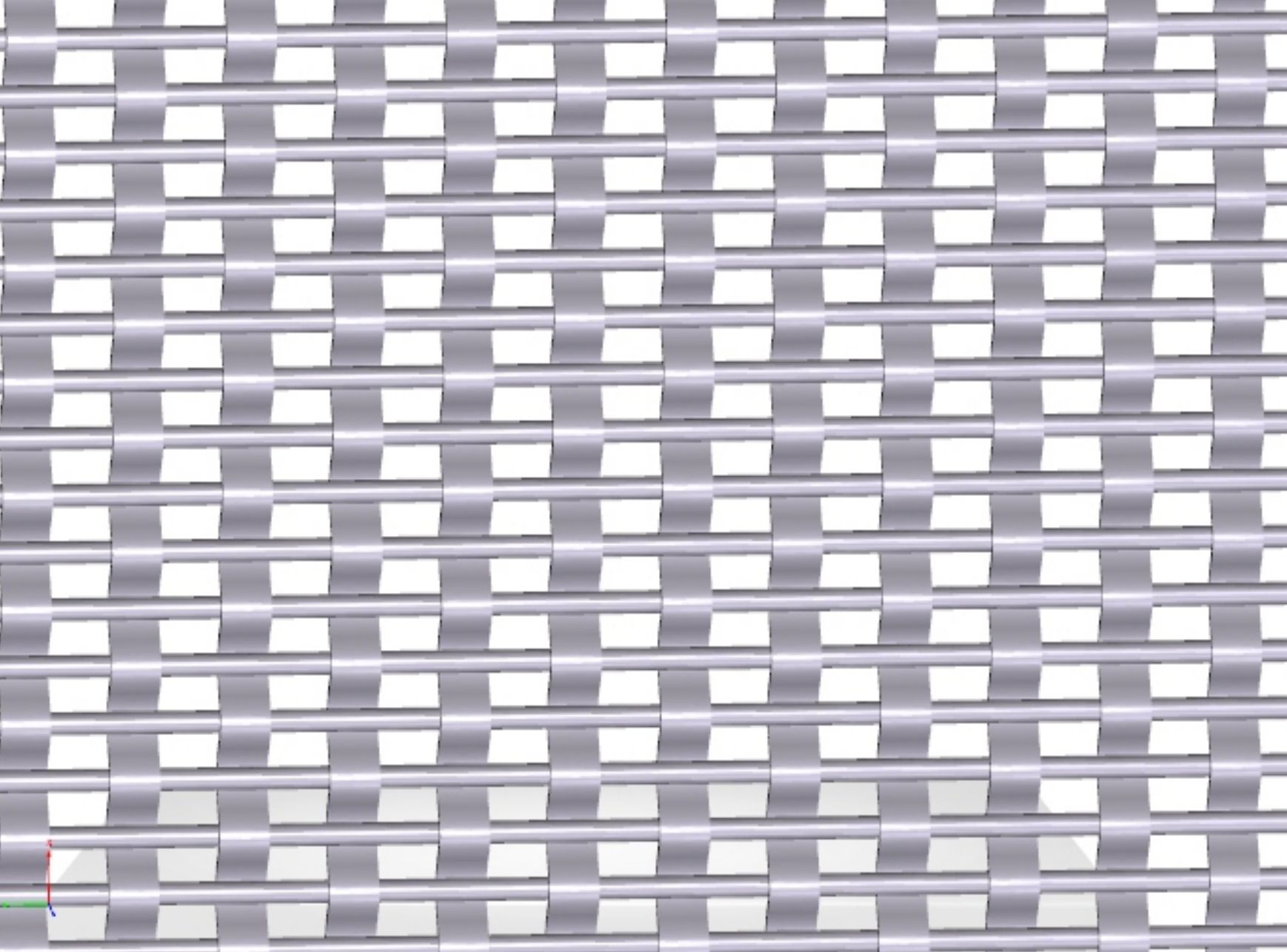


# XY-5875



|                       |                              |
|-----------------------|------------------------------|
| MATERIAL              | Stainless Steel 304、316、316L |
| WARP DIA.             | 5mm*1mm                      |
| WARP PITCH            | 11mm                         |
| WEFT DIA.             | 2.0mm                        |
| WEFT PITCH            | 5mm                          |
| WEIGHT                | 8.75kg/m <sup>2</sup>        |
| MAXIMUM "A" DIMENSION | 8m                           |
| MAXIMUM "B" DIMENSION | 4m                           |
|                       |                              |
|                       |                              |

